

# Advancing Physics AS 2000 CD-ROM Service Pack 1

May 2001

On NT-based network configurations a problem can occur with the AS CD-ROM Folio Views interface due to an issue with the Windows Registry. RM connect networks are not affected by this problem. This service pack provides a method of fixing a previous AS CD-ROM install or supplementing a new AS CD-ROM install.

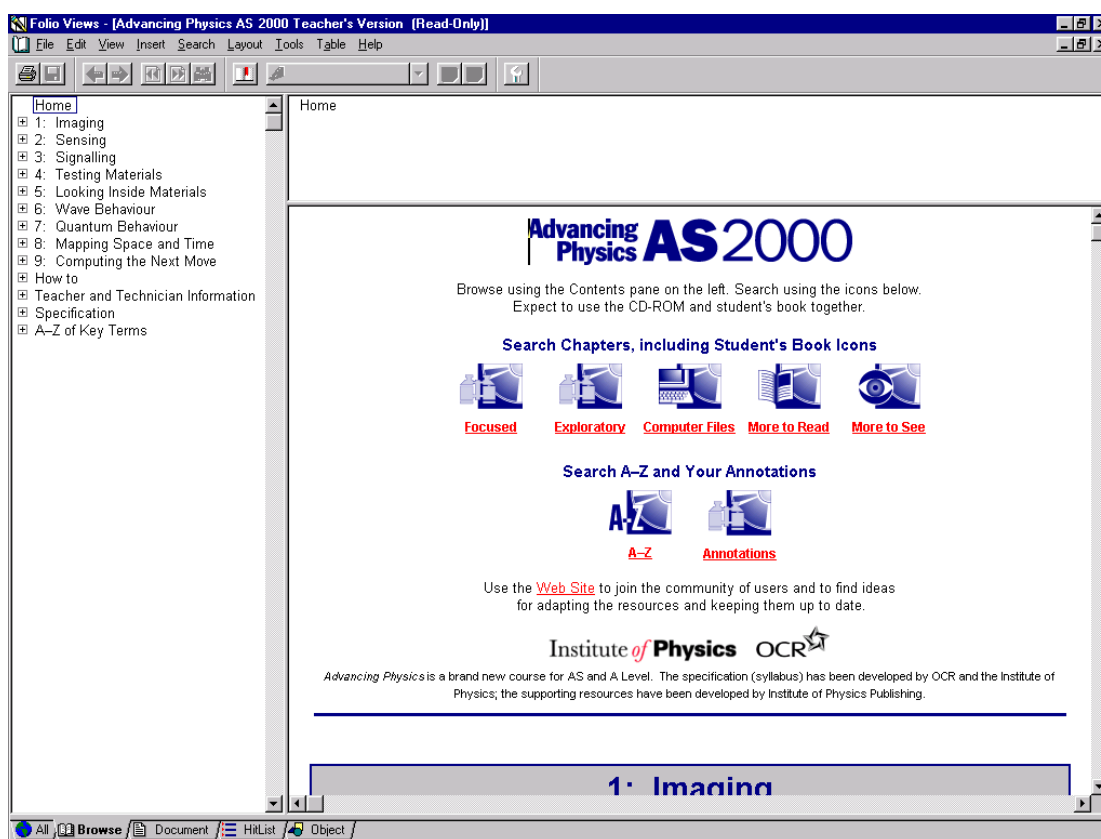
## The customised Advancing Physics Folio Views interface

The screenshot below shows the correct screen layout for *Advancing Physics* Folio Views. If you currently have a different layout, for example, you see 7 tabs at the bottom of the screen or a different set of toolbar buttons, you should consider loading the patch.

Before loading the patch, first check that the desktop shortcut is in the form (Student's CD-ROM):

```
"[Path to Folio Views]\Views.exe" -cSoftware\AdvPhySS "[Path to infobase on network hard drive]\AdvPhySS.nfo"
```

The -cSoftware parameter provides the location in registry where the interface information is held. (Substitute AdvPhyST for AdvPhySS if you are working on the Teacher's CD-ROM.)



## New AS CD-ROM installation

If you are installing *Advancing Physics AS 2000* (Student's or Teacher's CD-ROM) for the first time you will need to do one of the following.

- On networks that use distribution packages, install the Folio Views Network Client created in your previous Network Maximum install onto your clean machine as

documented in the InstallReadme.pdf. Having loaded the software, run the patch (AS-SP1.exe) to update the registry. At this point you should save the changes to your distribution package and then allocate the package to a test workstation. Check the Folio Views interface is presented correctly when logged on as a user before allocating the package to the other workstations on your network.

- On networks that do not use package distribution, install the Folio Views Network Client onto a workstation as documented in the InstallReadme.pdf. Having loaded the software, run the patch (AS-SP1.exe) to update the workstation's registry. Check the Folio Views interface is presented correctly when logged on as a user before proceeding with further installations.

In each case it is important to patch the Folio Views Network Client configuration before users login, because a user's profile will pick up and store a number of the registry values the first time Folio Views is executed.

### **Existing AS CD-ROM installation**

If you have already installed *Advancing Physics AS 2000* (Student's or Teacher's CD-ROM), there are several ways to apply the patch depending on your network configuration.

- On networks that use distribution packages, we recommend that you create a new package for the updated Folio Views Network Client. To create the new package, first install the Folio Views Network Client created in your previous Network Maximum install onto your clean machine as documented in the InstallReadme.pdf. Having loaded the software, run the patch (AS-SP1.exe) to update the registry and then save the changes to your distribution package. De-allocate the existing AS Folio Views Network Client package from your workstations before allocating the new updated package to a test workstation. Check the Folio Views interface is presented correctly when logged on as a user before allocating the package to the other workstations on your network. Depending on how your profiles are implemented, if the interface is displayed incorrectly see the troubleshooting section below.
- On networks that do not use package distribution, there are two recommended options.  
EITHER: Create a student user login script to run the silent version of the patch (AS-SP1-Silent.exe) to correct both the machine configuration and the user's profile keys in registry (recommended). Users will require temporary rights to allow changes to registry and C:\Program Files\Common Files\  
OR: Run the patch (AS-SP1.exe) while logged on as Administrator on each workstation in turn. Depending on how your profiles are implemented, if the interface is displayed incorrectly see the troubleshooting section below.

### **Troubleshooting**

Having applied the patch, if you find the Folio interface is still incorrect, there are two recommended solutions for different profile implementations.

#### **Mandatory profile**

Remove the key HKEY\_CURRENT\_USER\Software\AdvPhySS (Student's CD-ROM) or HKEY\_CURRENT\_USER\Software\AdvPhyST (Teacher's CD-ROM) from your mandatory user profile using regedit.

#### **Individual user profiles**

If individual user profiles are enabled, each user will have a copy of the Folio Views screen layout defined in registry in HKEY\_CURRENT\_USER\Software\AdvPhySS (Student's CD-ROM) or HKEY\_CURRENT\_USER\Software\AdvPhyST (Teacher's CD-ROM). To remove the registry key the administrator can choose to:

EITHER: Manually edit each profile on the network using regedit32. A description of the

procedure is supplied in Appendix A.

OR: Create a student user login script to run the silent version of the patch (AS-SP1-Silent.exe) to correct the user's registry keys. Users will require temporary rights to allow changes to registry and C:\Program Files\Common Files\.

## **Appendix A: Extract from Microsoft Knowledge Base**

### **Manually Administering a User Profile through the Registry**

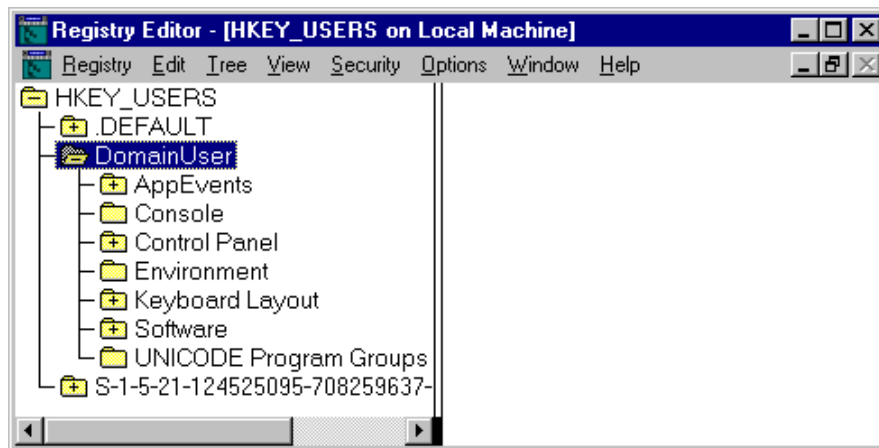
As system administrator, you may need to change a given setting to avoid unnecessary user interaction, to make modifications before setting the profile to mandatory, or to add custom registry entries. In addition, you may need to modify the Default User Profile on a computer before new users log on and use it as the template. You can open a specific user's profile or the Default User Profile and customize it manually as explained in the procedure below.

***NOTE: Make sure that the user is not logged on before using this procedure. If the user is logged on while changes are made, the changes will be overwritten by the user's preferences because profile settings are saved at log off.***

The NTuser.dat file contains all of the registry settings located in HKEY\_CURRENT\_USER. As system administrator, you can modify the data contained in the NTuser.dat portion of the profile by loading the hive into the registry.

### **To manually customize a User Profile:**

1. Locate the profile to be modified.
  - If the profile is a server-based profile, locate the \\server\share\username and determine the extension on the NTuser.xxx file.
  - If the profile is a local profile, locate the %systemroot%\Profiles\username directory, and determine the extension on the NTuser.xxx file.
  - If you need to edit the Default User Profile, locate the %systemroot%\Profiles\Default User directory, and determine the extension on the NTuser.xxx file.
  - If you need to edit the Network Default User Profile, locate the Default User folder in the NETLOGON share of the domain controllers that are doing user authentication, and determine the extension on the NTuser.xxx file. If there is more than one domain controller and directory replication is ensuring that the "Default User" profile is the same on all domain controllers, open only the profile on the domain controller which is the export server.
2. Start Regedt32.exe, and select the **HKEY\_USERS on Local Machine** window. Highlight the root key of HKEY\_USERS.
3. From the **Registry** menu, select Load Hive.
4. Browse for the directory identified in Step 1, and select the NTuser.xxx file located in that directory.
5. A dialog will prompt you to enter a Key Name. You can use any value, but you must remember this value so that you can select it during the unload process. For this reason, we recommend that you use the user name.
6. Click **Enter**. This adds the profile registry hive as a subkey to HKEY\_USERS, as shown in the illustration below.



7. Edit the existing values as necessary.
8. After completing the changes, highlight the root of the user's profile registry key, and from the **Registry** menu, select **Unload Hive**. This saves the changes to the user's profile. (When you first selected Load Hive, the key was mapped to the file selected in the Open dialog. A Save As option is therefore unnecessary.)

### Modifying the Default User Profile

To modify a Windows NT-based workstation's Default User Profile settings or to modify the Network Default User Profile, load the NTuser.xxx hive into the registry as outlined above, make the necessary changes, and unload the hive (this automatically saves the changes).

- The workstation Default User Profile is located in the `%systemroot%\Profiles\Default User` directory.
- To make changes to the Network Default User Profile, use the NTuser.xxx file from the scripts export directory (`%systemroot%\system32\rep\export\scripts`) of the domain controller that is the export server for the domain. Any changes that you make to this file will be replicated to the other domain controllers (which are import servers).

To provide users with a Default User Profile that contains custom shortcuts, folders, and files that are not centrally managed, place the icons in the appropriate folder within the Default User Profile. New users will receive the shortcuts, folders, and files as part of their new profiles. For example, if you want each new user that logs on to a given computer to receive a folder called "My Storage" on the desktop, just create this folder in the path:

`%systemroot%\Profiles\Default User\Desktop.`